



CHEM-CRETE StainiX[®]

Concrete Stain & Waterproofing Sealer

Revision 04-21-17 draft v10

PRODUCT DESCRIPTION: Chem-Crete StainiX[®] is a unique, water based, two-component stain and waterproofing sealer. It is available in eight decorative colors, which will enhance the appearance of the concrete surface. The low viscosity allows the Chem-Crete StainiX to penetrate into the concrete surface. Simply mix the waterproofing sealer (Part A) to the Chem-Crete StainiX 16oz (Part B), and apply a single coat.

This UV stable product does not require a top coat. If gloss or satin sheen is preferred, apply Chem-Seal 30 WB for gloss or CHEM-SEAL 14-WB for a satin finish. CHEM-SEAL 30-WB & 14-WB are clear, water based acrylic sealers that are ideal for enhancing the color of the stained surface.

PRODUCT FEATURES: Easy application by pump up or airless sprayer • One coat coverage • Non-film forming • UV stable • Environmentally safe (non-toxic, odorless)

FIELD OF APPLICATION: Chem-Crete StainiX can be used on any concrete or cementitious item or structure (e.g. buildings, bridges, walls, floors, decks, driveways, parking lots, seating areas, water features, barriers, etc.).

APPLICATION:

Surface Preparation: Surface must be clean, and free of contaminates, such as dirt, stains, paint, prior sealers, and oils, adhesives, curing compounds, form release agents or any other material that may impede the Chem-Crete StainiX from easily penetrating into the concrete surface. For Exterior Applications, refer to the Technical Data Sheet of Chem-Crete PaviX CCC100 and for Interior Applications, refer to the Technical Data Sheet of Chem-Crete Sofix CCC100. Clean areas by pressure washing or other abrasive methods. Any agents used to clean the surface must also be removed prior to application. Heavily contaminated areas can be cleaned using Chem-Crete CONCLEAN CCC 060 (biodegradable).

Absorption Requirement: The application surface must be able to absorb water for Chem-Crete StainiX to work properly. Test for required absorption capability by placing a droplet of water at multiple locations on the surface area. After a few minutes, if the droplet quickly runs off or stays beaded this may indicate the need for additional surface preparation.

Coverage: Exterior Applications, use PaviX CCC100 (Part A) and Interior Applications, use Sofix 100 (Part A). Coverage rate is approximately 175-225 square feet per gallon. A more accurate coverage rate depends on the temperature, porosity & the concrete's ability to absorb the product. Once dry, do not re-apply. Prior to application, a mock-up to actual surface is highly recommended. Mock-up should include all tools and techniques that will be used on the actual job. For best results, apply with pump sprayer or low pressure airless sprayer. Spray until surface no longer absorbs product. Avoid creating standing puddles. Use a broom or squeegee to spread excess product until absorption is complete. Failure to completely remove all residues prior to sealing the surface will cause appearance defects, adhesion loss or peeling, reduced durability, possible bond failure and delamination of the sealer.

Mixing: One 16oz bottle of Chem-Crete StainiX (Part B) to one gallon Waterproofing Sealer (Part A) & mix thoroughly. Apply the mixture in a single coat. Mix only the amount you require for immediate application. Continue mixing as needed to prevent separation.

CAUTIONS AND LIMITATIONS: Chem-Crete StainiX must be able to penetrate the substrate and may take on the characteristics of the surface. The colors produced are translucent. Do not use Chem-Crete StainiX to hide surface blemishes or construction problems. Do not use on areas previously treated with curing agents or sealers, unless they have been removed by chemical or mechanical means. Do not use if surface does not easily absorb water. Do not use if air or surface temperature fall below 40°F (4.4°C). Cover any nearby surface not intended for treatment to prevent overspray.

CLEANING: Clean all equipment and tools with clean water immediately after use.

STORAGE: Store unopened product in a cool, dry place for up to one year. Avoid heat or direct sun light. Do not allow product to freeze.

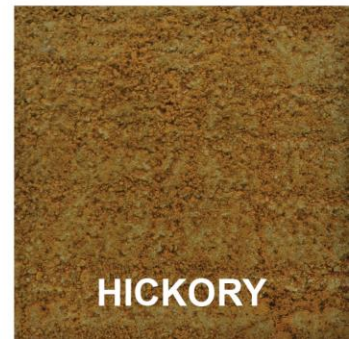
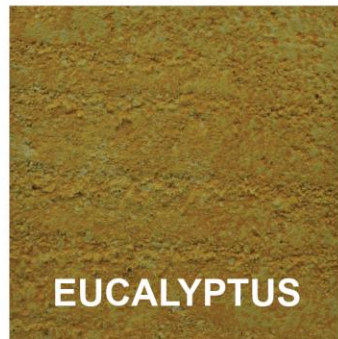
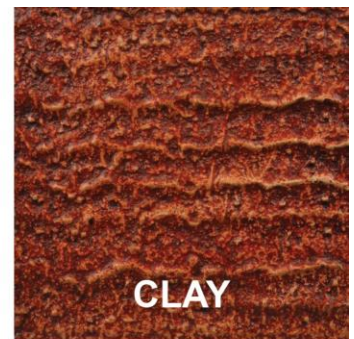
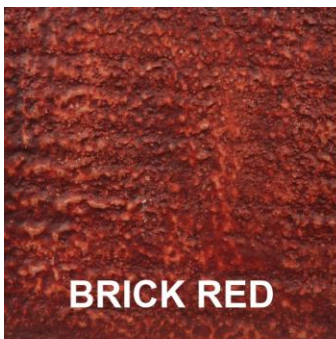
SAFETY PRECAUTIONS: As with all construction chemical products, adequate precautions and care must be taken during usage and storage. Avoid direct contact with foodstuff, eyes, skin, and mouth. Any direct contact with skin, eyes, etc. should be washed thoroughly with clean running water.

Always wear protective goggles and gloves. In case of eye contact, flush for 15 minutes with warm water. In case of ingestion, seek immediate medical attention. Keep out of reach of children

DISCLAIMER: The information contained herein is included for illustrative purposes only and, to the best of our knowledge, is accurate and reliable. Chem-Crete is not, under any circumstances, liable in connection with the use of information provided.

As Chem-Crete has no control over the application of its products, it is recommended that products be tested to determine suitability for specific applications. Color of application may vary from electronic or printed materials provided by the manufacturer.

COLORS: Brick Red, Burnt Sienna, Burnt Umber, Clay, Dove Gray, Eucalyptus, Granite, Hickory



LIMITED WARRANTY: Chem-Crete warrants that, at the time and place we make shipment, our materials will be of good quality and will conform to our published specifications in force on the date of acceptance of the order. Chem-Crete solely and expressly warrants that its products shall be free from defects in materials and workmanship for one (1) year from the date of purchase. Unless authorized in writing by an officer of Chem-Crete, no other representations or statements made by Chem-Crete or its representatives, in writing or orally, shall alter this warranty. Chem-Crete makes no warranties, implied or otherwise, as to the merchantability or fitness for ordinary or particular purposes of its products and excludes the same. If any Chem-Crete product fails to conform to this warranty, Chem-Crete will replace the product at no cost to purchaser. Replacement of any product shall be the sole and exclusive remedy available and purchaser shall have no claim for incidental or consequential damages. Any warranty claim must be made within one (1) year from the date of the claimed breach. Chem-Crete does not authorize anyone on its behalf to make any written or oral statements which in any way alter Chem-Crete's product information or instructions in its product literature or on its packaging labels. Any application of Chem-Crete products which fails to conform to such application instructions shall void this warranty. Purchaser shall be solely responsible for determining the suitability of Chem-Crete's products for the purchaser's intended purposes.



Manufactured by International Chem-Crete, Inc. • chem-crete.com
U.S.A • 800 Security Row • Richardson, TX 75081 • 972-671-6477
EUROPE • Stanicna 13 • 908 51 Holic • Republic of Slovakia • 421-34-6683181